

**GAYLER & POPE, LTD.**

HIGH STREET, MARYLEBONE, LONDON, W.1.

3 mins. from Harley Street and Bond Street Tube Station.

We specialise in NURSES' Wear. Our Overalls are made specially for us and are unequalled in Style, Cut and Value.



The "RODNEY" NURSES' UNIFORM DRESS.

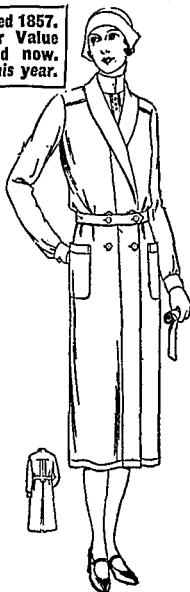
Nurse Cloth—  
10/11, 12/11, 14/11  
Poplin ... 15/11, 18/11  
Alpaca, unlined ... 18/11  
Lined bodice and sleeves ... 21/9  
Lined throughout 25/9  
Made to measure, 1/6 extra.



The "FITWELL."

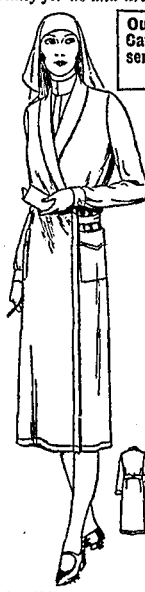
With adaptable Collar, good quality White Drill. S.W. 44in., W. 46in. 8/11 O.S. 48in. ... 9/6  
Linen Finish Cloth. S.W. 44in., W. 46in. 6/11 O.S. 48in. ... 7/6

Established 1857. Noted for Value then and now. Try us this year.



The "THELMA"

Double-breasted Coat Overall, with new pleated back, good quality White Drill. S.W. 44in., 46in. 8/11 W. 46in., 48in. ... 8/11 O.S. 48in., 50in. 9/6



The "PORTLAND."

New Cross-over Overall, long roll-collar, made in White Drill. S.W. 42in., 44in. 7/11 W. 46in., 48in. ... 8/11 O.S. 48in., 50in. ... 9/11 As sketch or with short sleeves.

Our Nurses' Catalogue is sent free on request.



The "EVELYN."

Nurses' Overall Dress. White Pique, or Drill. Short sleeves ... 9/11 Long sleeves ... 10/11 S.W., W. and O.S. Made to measure, 1/6 extra.



The "NEW BRIGHTON." Nurses' Uniform Dress. Nurse cloth—

10/11, 12/11, 14/11  
Poplin ... 15/11, 18/11  
Duro ... 16/11, 21/9  
Alpaca, unlined ... 18/11  
Lined bodice and sleeves ... 21/9  
Lined throughout 25/9  
A full range of patterns sent on request.  
Made to measure, 1/6 extra.

**The Registered Nurses' Association**

39, Portland Place, London, W.1

Telegraphic Address: "SOROR, LONDON."  
Telephone No. - - - LANGHAM 2421

THE Association has been in existence for thirty-seven years and only accepts on its staff Nurses who have had at least three years' training in a good general Hospital, and who are registered by the General Nursing Council for England and Wales.

The Association secures to the Nurses the just remuneration for their work.

The Association is managed by a professional Committee.

**Why the Association Succeeds**

The Medical Profession and the Public support the Association with confidence, because a high standard of professional efficiency is maintained, and it works on just economic principles.



**SHOULD BE KEPT IN EVERY SICK ROOM**

Sanitas Fluid should be sprayed about sick rooms to prevent the spread of infection and to re-vitalise the atmosphere through the oxygen which is liberated when Sanitas Fluid comes into contact with the air. (Sprays are supplied to fit the large bottles.)

When sponging a patient, a little Sanitas Fluid should be added to the water. It is very refreshing and greatly adds to the comfort of the patient.

As a Vaginal Douche, use one part Sanitas Fluid to nine parts of warm water.

Samples on request to Nurses enclosing their professional card to

**THE SANITAS CO. LTD. (Dept. B.J.N.5)**  
51, CLAPHAM ROAD, LONDON, S.W.9

[previous page](#)

[next page](#)